

STATES OF JERSEY



Jersey

DRAFT SEA FISHERIES (TRAWLING, NETTING AND DREDGING) (JERSEY) AMENDMENT REGULATIONS 202-

**Lodged au Greffe on 28th January 2026
by the Minister for the Environment
Earliest date for debate: 24th March 2026**

STATES GREFFE

REPORT

This amendment is designed to overhaul and update the [Sea Fisheries \(Trawling, Netting and Dredging\) \(Jersey\) Regulations 2001](#) ('TND Regulations'). The amendment also tidies elements of the [Sea Fisheries \(Miscellaneous Provisions\) \(Jersey\) Regulations 1998](#), and the [Sea Fisheries \(Minimum Size Limits\) \(Jersey\) Regulations 2001](#) which both currently house items more suited to the TND regulations.

The amendment to the Regulations absorbs all key provisions of the [Sea Fisheries \(Inshore Trawling, Netting and Dredging\) \(Jersey\) Regulations 2001](#) so that the management of mobile and passive gear is all contained in one place. The Inshore Regulations are therefore redundant and are revoked. By combining and updating the regulatory package a modern standard of management for both mobile fishing and static netting is created. The Regulations also deliver the Marine Protected Area (MPA) network as specified under the Jersey Marine Spatial Plan, driven in turn by the Bridging Island Plan.

In addition to the MPA network the technical updates to the Regulations are important. They close various grey areas and loopholes within static netting such as unregulated sand eel fishing and closing the unintended potential for beach set nets at the offshore reefs. Various measures to align with modern UK and EU standards relating to the specifics of fishing gear and target stocks are made along with modifications to terminology and standards. New simplified bycatch limitations are included that will be clearer for fishers to adhere to and for fishery officers to enforce.

The minimum size for commercial gill nets is increased from 90mm to 100mm in line with scientific advice. The minimum size for recreational gill nets is increased from 90mm to 112mm to further conserve stocks and avoid bycatch and dead discard of fish. The restriction on static nets being used within 200m of the shoreline in daylight hours between the 1st of April and the 15th of October on the east and south coast is expanded to the whole island. This reflects the increase in marine leisure activity in this zone in recent years and is in line with the priorities of the Jersey Marine Spatial Plan. Fishing nets are also required to be marked with a specific visible marker to the same end.

The Marine Protected Area network (where trawling and dredging are banned) is defined and programmed in for delivery in two phases. The main sections are being delivered on the 1st of September 2026 and the remaining phased areas on the 1st of January 2030 (Schedule 1A).

The list of areas closed seasonally to mobile gear as to conserve breeding stock or reduce conflict with other sea users is expanded and an Order making power is set out for the creation of future seasonal closures as required with evolving management (Schedule 1B).

These measures take several important steps in delivering the priorities of the Jersey Marine Spatial Plan as well as ensuring modern fisheries management standards can be followed in Jersey in line with the UK and EU. The amendment simplifies and clarifies several issues for fishers and will aid officers in enforcing regulations when breaches occur.

Financial and staffing implications

There are no additional financial or staffing implications as a result of this proposition.

Children's Rights Impact Assessment

A Children's Rights Impact Assessment (CRIA) screener has been prepared in relation to this proposition and is available to read on the States Assembly website.

EXPLANATORY NOTE

These Regulations, if made, would amend the Sea Fisheries (Trawling, Netting and Dredging) (Jersey) Regulations 2001 (the “TND Regulations”), the Sea Fisheries (Miscellaneous Provisions) (Jersey) Regulations 1998 (“the Miscellaneous Provisions Regulations”) and the Sea Fisheries (Minimum Size Limits) (Jersey) Regulations 2001 (the “Minimum Size Limits Regulations”). The primary purpose of the Regulations is to move many of the provisions of the Sea Fisheries (Inshore Trawling, Netting and Dredging) (Jersey) Regulations 2001 (the “Inshore Regulations”) into Part 2 of the TND Regulations so that the regulation of mobile and passive gear is all contained in that Part.

Regulation 1 states that *Regulations 2 to 16* amend the TND Regulations.

Regulation 2 amends *Regulation 1* (interpretation). It inserts a definition of “mobile gear” and “passive gear” and makes clear that references to “use of a net” in the Regulations means use for the purpose of catching sea fish.

Regulation 3 deletes *Regulation 2* (application) so that reliance is placed on the application provision in Article 1(2) of the Sea Fisheries (Jersey) Law 1994.

Regulation 4 substitutes a new Part 2 (use of mobile gear and passive gear).

Division 1 of that new Part 2 deals with mobile gear.

Regulation 3 prohibits towing or using mobile gear in the restricted sea areas that are described in Schedule 1A. There is also a prohibition on towing or using mobile gear for specific seasonal periods in areas listed in Schedule 1B. An Order-making power is given to the Minister to amend those seasonally restricted sea areas and seasonal periods of time.

Regulation 4 prohibits the use of trawl nets with a mesh size of less than 80 millimetres.

Regulation 5 restricts the use of towed nets.

Regulation 6 restricts the retention and landing of sea fish or shellfish if dredges or trawls are used.

Regulations 7 to 11 replicate the various restrictions on the use of nets currently contained in Regulations of corresponding numbers in the TND Regulations, except that –

- (a) *Regulation 8* now applies to towed nets with a mesh size of 80 rather than 50 millimetres or more; and
- (b) an Order-making power is added to *Regulation 9* to allow the Minister to vary the mesh sizes in that *Regulation*.

Regulation 12 replicates the current *Regulation 13* of the TND Regulations.

Regulation 13 (construction of certain cod-ends controlled) replicates existing *Regulation 14* of the TND Regulations, except that the measurements of twine thickness are altered from 8 to 6 millimetres in paragraph (1) and 12 to 8 millimetres in paragraph (2)(b).

Regulation 14 restricts the towing of a draw net during a fishing voyage unless the conditions in paragraph (2) are met. The Minister may amend those conditions by Order.

Regulation 15 restricts the use of a net to draw fish ashore unless the conditions in either paragraph (2) or (3) are met. The *Regulation* also prohibits the use of a motor vehicle or motorised winch to draw a net ashore.

Regulation 16 contains restrictions on the carriage and use of beam trawls.

Regulation 17 contains restrictions on the use of scallop dredges and an Order-making power to amend certain measurement in that *Regulation*.

Regulation 18 replicates Regulation 22 of the existing TND Regulations and prohibits the encirclement of mammals with purse seines.

Division 2 of the new Part 2 deals with passive gear.

Regulation 19 contains a prohibition on the carrying or use of passive gear with a mesh size of less than 100 millimetres when fishing from a boat with a fishing boat licence, unless that fishing boat licence authorises otherwise. If the fishing is only for recreational purposes or for fishing operations for the purposes of scientific investigations the passive gear must have a mesh size of less than 112 millimetres.

Regulation 20 contains prohibitions on the use of passive gear in certain sea depths and during the hours of daylight during the period of 1 April to 15 October in the sea area that is within 200 metres of the shoreline (as it rises and falls throughout the day).

Regulation 21 prohibits the use of beach set nets. Beach set nets are passive gear (as defined in Article 1), other than pots or creels, that are put in place otherwise than from a vessel.

Regulation 22 prohibits the use of gillnets or trammel nets unless a buoy is attached that meets listed characteristics.

Division 3 contains general matters.

Regulation 23 and 24 replicate existing restrictions on trans-shipping and obstructing meshes of nets. These are currently found in Regulations 19 and 20 of the TND Regulations.

Regulation 25 and 26 replicate existing prohibitions and restrictions on processing and sorting. These are currently found in Regulations 23 and 24 of the TND Regulations.

Regulation 5 amends Regulation 27 (interpretation – Part 3) to remove the definitions of “active gear” and “passive gear”.

Regulation 6 amends Regulation 31 (selection of meshes in active gear) to change the term “active gear” to “mobile gear”.

Regulation 7 deletes Schedule 1.

Regulation 8 amends the heading to Schedule 1A (as a result of changes made to Regulation 3(1) – see *Regulation 4* above) and inserts 8 new restricted sea areas into that Schedule. On 1 September 2026 that Schedule is replaced in its entirety so that 7 separate Marine Protection Areas (“MPAs”) are created. On 1 January 2030, the Jersey Coastal MPA is enlarged, the Basse des Boeufs MPA is removed (because it is subsumed into the Jersey Coastal MPA) and the coordinates of the Ecrehous and Minquiers MPAs are altered.

Regulation 9 inserts a new Schedule 1B (linked to Regulation 3(2)), which sets out the seasonally restricted sea areas.

Regulation 10 deletes Schedule 2 (permitted combinations of mesh size ranges) because it is no longer relevant.

Regulation 11 deletes Schedule 3 (conditions for use of combinations of nets that includes a net with a mesh size of 100 mm or more) because it is no longer relevant.

Regulation 12 deletes Schedule 5 (bottom set gillnets, entangling nets and trammel nets) because it is no longer relevant.

Regulation 13 amends Schedule 8 (technical specifications of the mesh gauge) by correcting a spelling error, adding a requirement that mesh gauges must be marked with the words “EC gauge” and correcting the maximum operating temperature included in the table.

Regulation 14 amends Schedule 9 (technical specification of the twine thickness gauge) to add a requirement that gauges for assessing the thickness of twine must be marked with the words “EC gauge”.

Regulation 15 amends Schedule 11 to change a reference to “active gear” to “mobile gear”.

Regulation 16 introduces *Schedule 1*, which contains minor amendments to the TND Regulations. Some defined terms are moved into Regulation 1 (interpretation), multiple amendments are made to ensure consistent use of the defined term “fishery officer” (as used in the Sea Fisheries (Jersey) Law 1994 under which the TND Regulations are made) and a spelling correction is made.

Regulation 17 deletes Regulation 3A of the Sea Fisheries (Licensing of Fishing Boats) (Jersey) Regulations 2003. This is a consequence of the inclusion of the Frouquier Aubert area in new Schedule 1B (seasonally restricted sea areas) to the TND Regulations (see *Regulation 9* above).

Regulation 18 states that *Part 2 (Regulations 18 to 20)* amends the Miscellaneous Provisions Regulations.

Regulation 19 and 20 work together to insert Regulation 8F (which works with a new Schedule) and Regulation 8G. Regulation 8F (sea fish to be retained on board whole) is based on existing Regulation 7 of the Minimum Size Limits Regulations, with some amendments. Regulation 8G introduces a prohibition on fishing using electric current.

Regulation 21 states that *Part 3 (Regulations 21 and 22)* amends the Minimum Size Limits Regulations.

Regulation 22 deletes Regulation 7 because its contents have been relocated to the Miscellaneous Provisions Regulations (see *Regulation 19 and 20* above).

Regulation 23 repeals the Inshore Regulations.

Regulation 24 provides the name of these Regulations and sets out the commencement dates. The majority of the Regulations come into force on a day to be specified by the Minister for the Environment by Order. However, Schedule 1A of the TND Regulations (restricted sea areas) is replaced on 1 September 2026 and then the co-ordinates for the Jersey Coastal, Ecrehous and Minquiers MPAs are altered on 1 January 2030.



Jersey

DRAFT SEA FISHERIES (TRAWLING, NETTING AND DREDGING) (JERSEY) AMENDMENT REGULATIONS 202-

Contents

Regulation

PART 1	8
SEA FISHERIES (TRAWLING, NETTING AND DREDGING) (JERSEY) REGULATIONS 2001 AMENDED	8
1 Sea Fisheries (Trawling, Netting and Dredging) (Jersey) Regulations 2001 amended ..	8
2 Regulation 1 (interpretation) amended	8
3 Regulation 2 (application) deleted	9
4 Part 2 substituted	9
5 Regulation 27 (interpretation - Part 3) amended	16
6 Regulation 31 (selection of meshes in active gear) amended	16
7 Schedule 1 (towed gear) deleted.....	16
8 Schedule 1A (areas within which trawling or dredging is prohibited) amended	16
9 Schedule 1B inserted	29
10 Schedule 2 (permitted combinations of mesh size ranges) deleted	31
11 Schedule 3 (conditions for use of combinations of nets that includes a net with a mesh size of 100 millimetres or more) deleted	31
12 Schedule 5 (bottom set gillnets, entangling nets and trammel nets) deleted	31
13 Schedule 8 (technical specifications of the mesh gauge) amended.....	32
14 Schedule 9 (technical specifications of the twine thickness gauge) amended	32
15 Schedule 11 (preparation of the mesh gauge) amended	32
16 Minor amendments	32
17 Consequential amendment	32
PART 2	32
SEA FISHERIES (MISCELLANEOUS PROVISIONS) (JERSEY) REGULATIONS 1998 AMENDED	32
18 Sea Fisheries (Miscellaneous Provisions) (Jersey) Regulations 1998 amended	32
19 Regulations 8F (sea fish to be retained on board whole) and 8G (prohibition on taking sea fish using electric current) inserted.....	32
20 Schedule inserted	33
PART 3	33
SEA FISHERIES (MINIMUM SIZE LIMITS) (JERSEY) REGULATIONS 2001 AMENDED	33

21	Sea Fisheries (Minimum Size Limits) (Jersey) Regulations 2001 amended	33
22	Regulation 7 (certain sea fish to be retained whole) deleted	33
PART 4		33
FINAL PROVISIONS		33
23	Repeal	33
24	Citation and commencement	34
SCHEDULE 1		35
MINOR AMENDMENTS TO THE SEA FISHERIES (TRAWLING, NETTING AND DREDGING) (JERSEY) REGULATIONS 2001		35
1	Regulation 1 (interpretation).....	35
2	Regulation 27 amended.....	35
3	References to “fisheries officer” and “fishing officer” amended	35
4	Regulation 60 amended.....	36



Jersey

DRAFT SEA FISHERIES (TRAWLING, NETTING AND DREDGING) (JERSEY) AMENDMENT REGULATIONS 202-

Made [date to be inserted]

Coming into force [date to be inserted]

THE STATES make these Regulations under Articles 2, 5, 6, 7 and 29 of the [Sea Fisheries \(Jersey\) Law 1994](#) –

PART 1

SEA FISHERIES (TRAWLING, NETTING AND DREDGING) (JERSEY) REGULATIONS 2001 AMENDED

1 Sea Fisheries (Trawling, Netting and Dredging) (Jersey) Regulations 2001 amended

Regulations 2 to 16 amend the [Sea Fisheries \(Trawling, Netting and Dredging\) \(Jersey\) Regulations 2001](#).

2 Regulation 1 (interpretation) amended

(1) In Regulation 1, the introductory words are renumbered as paragraph (1).

(2) In Regulation 1, after the definition “mesh size” there is inserted –

“mobile gear” –

(a) means fishing gear for which the catch operation requires an active movement of the gear;

(b) includes all types of –

(i) towed gear;

(ii) dredge;

(iii) encircling gear;

(iv) trawl;

(v) seine;

(vi) draw net; and

(vii) any similar towed net;

- (c) does not include a net that is operated by being pushed by hand by an individual who is standing on the seabed;
- (3) In Regulation 1, for the definition “passive gear” there is substituted –
 - “passive gear” means fishing gear for which the catch operation does not require an active movement of the gear, and includes –
 - (a) a gillnet;
 - (b) an entangling net;
 - (c) a trammel net; and
 - (d) any equipment attached to the gear, including an anchor, line or float;
- (4) After the renumbered paragraph (1) there is inserted –
 - (2) References in these Regulations to the use of a net means the use of the net for the purpose of catching sea fish.

3 Regulation 2 (application) deleted

Regulation 2 is deleted.

4 Part 2 substituted

For Part 2 there is substituted –

PART 2

USE OF MOBILE GEAR AND PASSIVE GEAR

DIVISION 1 – MOBILE GEAR

3 Restrictions on towing or using mobile gear

- (1) It is prohibited to tow or use mobile gear within an area of the sea described in Schedule 1A.
- (2) It is prohibited to tow or use mobile gear within an area of the sea described in column 1 of the table in Schedule 1B (the “seasonally restricted sea areas”) during the period of each calendar year in the corresponding row in column 2 of that table.
- (3) The Minister may by Order amend the seasonally restricted sea areas and periods of the calendar year specified in Schedule 1B.

4 Restriction on trawl nets

It is prohibited to use a trawl net with a mesh size of less than 80 millimetres.

5 Restrictions on towed nets

- (1) It is prohibited to use at the same time a combination of towed nets of different mesh sizes.
- (2) If a fishing boat has towed nets on board that are not being used and that have a mesh size of less than 80 millimetres, the master of that boat must ensure that –
 - (a) the nets that are not being used and their accompanying weights and sea fishing gear are disconnected from their trawl boards and towing and hauling wires and ropes; and
 - (b) any such nets that are on or above deck are securely lashed to some part of the superstructure of the boat.

6 Restriction on retention and landing

- (1) If during a fishing voyage dredges are used, it is prohibited to retain on board or land sea fish, other than bivalve molluscs, exceeding 5% of the total weight of sea fish on board.
- (2) If during a fishing voyage trawls are used, it is prohibited to retain on board or land shellfish exceeding 5% of the total weight of sea fish on board.

7 Prohibition on carrying and using certain towed nets

- (1) This Regulation applies to a demersal trawl, a seine or a similar towed net with, in each case –
 - (a) more than 100 meshes in any circumference of the cod-end sensu stricto, excluding the joinings and selvages; and
 - (b) a mesh size that is not less than 90, but not more than 119, millimetres.
- (2) But this Regulation does not apply to a beam trawl.
- (3) It is prohibited to carry on board or use a net to which this Regulation applies.

8 Restriction on design of certain towed nets

- (1) This Regulation applies to a towed net with a mesh size of 80 millimetres or more.
- (2) Within a single cod-end sensu stricto the number of meshes around any circumference of the cod-end must not increase from the front end to the rear end.
- (3) The number of meshes at the point of any circumference of any extension piece or lengthening piece must not be less than the maximum number of meshes on the circumference of the front end of the cod-end sensu stricto.
- (4) Paragraph (3) does not apply to meshes in any selvages.

9 Certain towed nets to be equipped with square-meshed panels

- (1) This Regulation applies to a demersal trawl, a seine or a similar towed net with, in each case, a mesh size that is not less than 70, but not more than 79, millimetres.

- (2) The net must be equipped with a square-meshed panel positioned anterior to the cod-end.
- (3) The panel must have a mesh size of 80 millimetres or more.
- (4) The Minister may by Order amend the mesh sizes in paragraphs (1) and (3).

10 Panels may be inserted into other towed nets

- (1) Any towed net may have a square-meshed panel of a mesh size of 80 millimetres or more inserted into it.
- (2) Alternatively, a demersal trawl, a seine or a similar towed net with, in each case, a mesh size of 100 millimetres or more may be equipped with a special selectivity device that complies with all the conditions set out in either Part 1 or Part 2 of Schedule 4.

11 Requirements in respect of square-meshed panels

- (1) This Regulation applies to a square-meshed panel inserted into a towed net.
- (2) The panel must be placed on the top half of the net –
 - (a) in front of any extension piece; or
 - (b) at a point between the front of any extension piece and the posterior of the cod-end.
- (3) The panel must not be obstructed by internal or external attachments.
- (4) The panel must be at least 3 metres long or, if the net is towed by a vessel of less than 112 kilowatts, 2 metres long.
- (5) The panel must be made of knotless netting or of netting with non-slip knots.
- (6) The panel must be inserted in the net in such a way that its meshes remain fully open at all times when fishing.
- (7) The panel must be constructed so that the number of meshes in the anterior row of meshes of the panel is the same or more than the number of meshes in the posterior row of meshes in the panel.
- (8) If a panel is inserted in an untapered portion of a net there must be no more than 5 open diamond meshes between each panel side and the adjacent selvages of the net.
- (9) If a panel is inserted, whether wholly or partially, into a tapered portion of a net there must be no more than 5 open diamond meshes between the posterior row of meshes in the panel and the adjacent selvages in the net.
- (10) In this Regulation, “knotless netting” means netting that is composed of meshes of 4 sides of approximately equal length in which the corners of the meshes are formed by the interweaving of the twines of 2 adjacent sides of the mesh.

12 Measurement of mesh size of towed net

The mesh size of any square-meshed netting inserted into a towed net must not be taken into consideration in measuring the mesh size of the net.

13 Construction of certain cod-ends controlled

- (1) It is prohibited during a fishing voyage to carry on board or to use a towed net constructed in the cod-end, whether wholly or partially, of single twine netting material with a twine thickness of more than 6 millimetres.
- (2) It is prohibited during a fishing voyage to carry on board or to use a towed net constructed in the cod-end, whether wholly or partially, of netting material consisting of multiple twine unless –
 - (a) the multiple twines are of approximately equal thickness; and
 - (b) the sum of the thicknesses of the multiple twines on each side of any mesh is no more than 8 millimetres.
- (3) Paragraphs (1) and (2) do not apply in respect of pelagic trawls.
- (4) It is prohibited during a fishing voyage to carry on board or to use a towed net the cod-end of which is constructed, whether wholly or partially, of netting material other than square mesh or diamond mesh.
- (5) Paragraph (4) does not apply in respect of a towed net the cod-end of which has a mesh size of 31 millimetres or less.
- (6) For the purposes of this Regulation, “multiple twine”, in respect of netting, means netting constructed of 2 or more twines, where the twines can be separated between knots without damage to the twine structure.

14 Restriction on towing draw nets

- (1) It is prohibited during a fishing voyage to tow a draw net.
- (2) But a seine net may be towed if –
 - (a) the net is not made of monofilament;
 - (b) the net has a length of 70 metres or less;
 - (c) the net has a mesh size of 55 millimetres or less; and
 - (d) only lesser sand eels, greater sand eels or Corbin’s sand eels are retained on board.
- (3) The Minister may by Order amend the conditions listed in paragraph (2).

15 Restriction on use of draw nets to draw fish ashore

- (1) Except as provided by this Regulation, it is prohibited to use a net to draw fish ashore.
- (2) A seine net may be used to draw fish ashore if –
 - (a) the net is not made of monofilament;
 - (b) the net has a length of 70 metres or less;
 - (c) the net has a mesh size of 55 millimetres or less; and
 - (d) only lesser sand eels, greater sand eels or Corbin’s sand eels are retained.
- (3) Alternatively, a seine net may be used to draw fish ashore if –
 - (a) the net has a mesh size of 100 millimetres or more;
 - (b) the net is used within the period starting 1 hour before and ending 3 hours after low water; and

- (c) the net is used –
 - (i) in St. Ouen’s bay; or
 - (ii) in the area of the Royal bay of Grouville between the rocks known as the Tas du Nord and the seaward end of the pier at Gorey.
- (4) It is prohibited to use a motor vehicle or a motorised winch to draw a net ashore.

16 Restriction on carriage and use of beam trawls

- (1) It is prohibited to –
 - (a) use more than 1 beam trawl from a fishing boat with a beam length of more than 6 metres; or
 - (b) use a beam trawl from a fishing boat with an engine whose power is more than 221 kW.
- (2) Unless paragraph (3) applies, it is prohibited to –
 - (a) carry on a fishing boat a beam trawl, the beam length of which is more than 6 metres; or
 - (b) carry a beam trawl on a fishing boat with an engine whose power is more than 221 kW.
- (3) This paragraph applies if the beam trawl, and any equipment attached to it –
 - (a) is stored on the fishing boat in such a way that no part of the trawl or equipment is suspended over the side or the stern of the boat; and
 - (b) is secured on the fishing boat in such a way that the trawl is not immediately ready for use.
- (4) The beam length of a beam trawl is taken to be more than 6 metres if the beam can be extended to a length more than 6 metres.
- (5) The length of a beam trawl must be measured between its extremities, which must be taken to include any attachment to the beam.

17 Restriction on use of scallop dredges

- (1) It is prohibited for a fishing boat to tow or use –
 - (a) more than 2 beams to which scallop dredges are attached; or
 - (b) a beam to which more than 6 scallop dredges are attached.
- (2) It is prohibited to use scallop dredges that have an aggregate mouth size of more than 9.6 metres.
- (3) Paragraphs (1) and (2) do not apply to beams or scallop dredges that are stowed so that they cannot be readily used.
- (4) It is prohibited to tow or use a scallop dredge if, where the belly of, or any side of, the bag that comprises part of the dredge consists of rings, the smallest part of the internal diameter of the rings measures less than 85 millimetres across.
- (5) It is prohibited to tow or use a scallop dredge if the netting used in the top of the bag that comprises part of the dredge has a mesh size of less than 112 millimetres.

- (6) It is prohibited to tow or use a scallop dredge if the rings used in the top side of the dredge have an internal diameter of less than 80 millimetres.
- (7) It is prohibited to carry on board or use a scallop dredge if, where the belly of, or any side of, the bag that comprises part of the dredge consists of rings –
 - (a) a device or material is attached to the dredge, in the vicinity of the rings; and
 - (b) the device or material may have the effect of obstructing the movement of any object through the diameter of the rings.
- (8) In this Regulation, “scallop dredge” means a type of fishing gear –
 - (a) that is comprised of teeth, or other mechanisms, that may be used to scrape scallops off the seabed; and
 - (b) that is attached to a bag in which scallops scraped off the seabed can be collected.
- (9) The Minister may by Order amend the measurements in paragraphs (4), (5) and (6).

18 Prohibition of encirclement of mammals with purse seines

It is prohibited when attempting to catch sea fish to encircle a school or group of marine mammals with purse seines.

DIVISION 2 – PASSIVE GEAR

19 Prohibition on carrying and using certain passive gear

- (1) It is prohibited during a fishing voyage to carry or use passive gear –
 - (a) with a mesh size of less than 100 millimetres for fishing from a fishing boat with a fishing boat licence, unless otherwise authorised by that fishing boat licence under Regulation 2 of the Licensing Regulations; and
 - (b) with a mesh size of less than 112 millimetres for fishing as described in Regulation 5 of the Licensing Regulations (recreational fishing or fishing operations for the purposes of scientific investigations).
- (2) In this Regulation –

“fishing boat licence” has the meaning given in Regulation 1 of the Licensing Regulations;

“Licensing Regulations” means the Sea Fisheries (Licensing of Fishing Boats) (Jersey) Regulations 2003.

20 Prohibition on use of passive gear in certain sea depths and inshore areas

- (1) It is prohibited to use passive gear where the depth of the sea is less than 130 centimetres or another depth that the Minister may by Order specify.
- (2) It is prohibited to use passive gear in the sea area within 200 metres of the shoreline during the prohibited time.
- (3) In paragraph (2) –

“shoreline” means the point at which the sea and the shore meet at any given time;

“prohibited time” means the hours of daylight during the period 1 April to 15 October in each calendar year

21 Restrictions on the use of beach set nets

- (1) It is prohibited to use a beach set net.
- (2) In this Regulation, “beach set net” means passive gear, other than pots or creels, that is put in place otherwise than from a vessel.

22 Marking of gillnets nets and trammel nets

It is prohibited to use a gillnet or a trammel net unless it has a buoy attached by line to each end of the net to which is attached a separate float that is –

- (a) coloured red and white;
- (b) at least 15 centimetres in width;
- (c) at least 25 centimetres in length; and
- (d) visible above the surface of the water.

DIVISION 3 – GENERAL

23 Restriction on trans-shipping

It is prohibited to trans-ship sea fish to or from a vessel if the master of the vessel does not complete a log book in accordance with the Log Book Regulations.

24 Attachments to nets

Except to the extent permitted by these Regulations, it is prohibited to use a device that obstructs or otherwise diminishes the mesh in any part of a net.

25 Certain processing operations prohibited

- (1) It is prohibited to carry out on board a vessel any physical or chemical processing of fish to produce fishmeal, oil or similar products. or to trans-ship fish for such a purpose.
- (2) It is prohibited to trans-ship fish for a purpose described in paragraph (1).
- (3) Paragraphs (1) and (2) do not apply to the processing or trans-shipment of offal, nor to the production on board a fishing boat of surimi or fish pulp.

26 Sorting

Sorting must be carried out immediately after the catch has been removed from the net.

5 Regulation 27 (interpretation - Part 3) amended

In Regulation 27 –

- (a) the definition “active gear” is deleted;
- (b) the definition “passive gear” is deleted.

6 Regulation 31 (selection of meshes in active gear) amended

In Regulation 31, for “active gear” there is substituted “mobile gear” in –

- (a) the heading;
- (b) paragraph (1).

7 Schedule 1 (towed gear) deleted

Schedule 1 is deleted.

8 Schedule 1A (areas within which trawling or dredging is prohibited) amended

(1) In Schedule 1A for the heading there is substituted –

SCHEDULE 1A

(Regulation 3(1))

RESTRICTED SEA AREAS

(2) In Schedule 1A after paragraph 2 there is inserted –

- 3. The area of sea within St. Brelade’s bay bounded on the seaward side by a straight line beginning with co-ordinate 1 and joining in a straight line to co-ordinate 2 –

Co-ordinate number	Latitude (WGS84)	Longitude (WGS84)
1	49°10.523’N	002°12.637’W
2	49°10.162’N	002°11.373’W

- 4. The area of sea within St. Aubin’s bay bounded on the seaward side by a straight line beginning with co-ordinate 1 and joining in a straight line to co-ordinate 2 –

Co-ordinate number	Latitude (WGS84)	Longitude (WGS84)
1	49°10.4912’N	002°09.8365’W
2	49°10.5536’N	002°07.6455’W

5. The area of sea within the small roads in St. Aubin's bay bounded on the seaward side by a straight line beginning with co-ordinate 1 and joining in the sequence given, in a series of straight lines, co-ordinates 1 to 5 –

Co-ordinate number	Latitude (WGS84)	Longitude (WGS84)
1	49°10.225'N	002°07.390'W
2	49°10.109'N	002°07.491'W
3	49°09.957'N	002°07.282'W
4	49°09.990'N	002°06.951'W
5	49°10.071'N	002°06.681'W

6. The area of sea within Fliquet bay bounded on the seaward side by a straight line beginning with co-ordinate 1 and joining in a straight line to co-ordinate 2 –

Co-ordinate number	Latitude (WGS84)	Longitude (WGS84)
1	49°13.335'N	002°00.650'W
2	49°14.0738'N	002°01.2833'W

7. The area of sea to the east of Jersey bounded on the seaward side by straight lines beginning with co-ordinate 1 and joining in the sequence given, in a series of straight lines, co-ordinates 1 to 9 –

Co-ordinate number	Latitude (WGS84)	Longitude (WGS84)
1	49°09.753'N	002°01.897'W
2	49° 08.225'N	002° 00.171'W
3	49°08.831'N	001°58.871'W
4	49° 09.771'N	001° 58.797'W
5	49°10.130'N	001°59.231'W
6	49°10.963'N	001°59.852'W
7	49°12.022'N	002°00.598'W
8	49°12.857'N	002°00.478'W
9	49°13.335'N	002°00.650'W

8. The area of sea to the north of Jersey bounded on the seaward side by straight lines beginning with co-ordinate 1 and joining in the sequence given, in a series of straight lines, co-ordinates 1 to 13 –

Co-ordinate number	Latitude (WGS84)	Longitude (WGS84)
1	49°15.500'N	002°14.800'W
2	49°15.493'N	002° 14.883'W
3	49°15.615'N	002° 14.975'W
4	49°15.815'N	002°14.170'W
5	49°15.815'N	002° 12.250'W
6	49°15.370'N	002° 11.170'W
7	49°15.840'N	002° 09.400'W
8	49°16.000'N	002° 07.830'W
9	49°15.820'N	002° 06.150'W
10	49°15.200'N	002° 03.100'W
11	49°14.595'N	002° 01.730'W
12	49°14.150'N	002° 01.180'W
13	49°13.967'N	002°01.566'W

9. The area of sea to the south and east of Jersey bounded on the seaward side by straight lines beginning with the co-ordinate 1 and joining in the sequence given, in a series of straight lines, co-ordinates 1 to 18 –

Co-ordinate number	Latitude (WGS84)	Longitude (WGS84)
1	49°10.071'N	002°06.681'W
2	49°09.990'N	002°06.951'W
3	49°09.006'N	002°06.141'W
4	49°08.610'N	002°05.140'W
5	49°08.100'N	002°01.700'W
6	49°07.820'N	001°59.040'W
7	49°07.743'N	001°55.012'W
8	49°08.702'N	001°55.400'W
9	49°08.713'N	001°56.012'W
10	49°09.849'N	001°55.955'W
11	49°09.851'N	001°57.155'W
12	49°08.782'N	001°57.211'W
13	49°08.800'N	001°57.616'W
14	49°10.590'N	001°58.997'W
15	49°10.980'N	001°59.535'W

Co-ordinate number	Latitude (WGS84)	Longitude (WGS84)
16	49°12.022'N	002°00.598'W
17	49°12.857'N	002°00.478'W
18	49°13.335'N	002°00.650'W

10. The area of sea to the south of Jersey, west of St. Aubin's bay, bounded on the seaward side by straight lines beginning with the co-ordinate 1 and joining in the sequence given, in a series of straight lines, co-ordinates 1 to 5 –

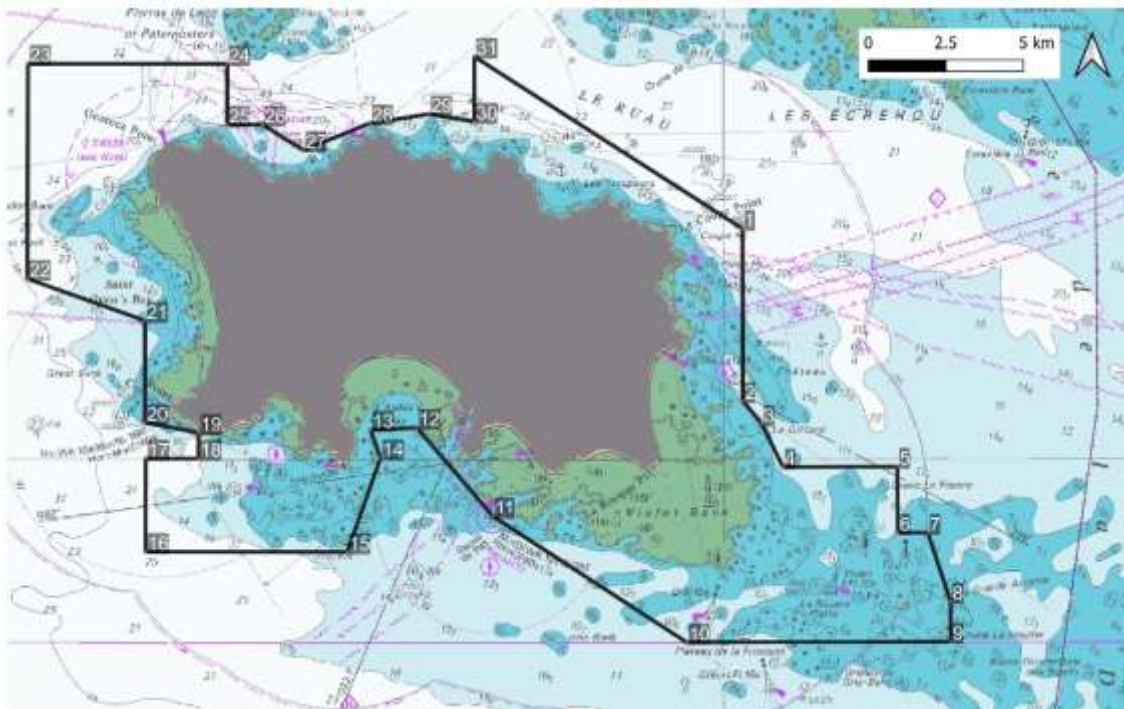
Co-ordinate number	Latitude (WGS84)	Longitude (WGS84)
1	49°10.494'N	002°09.843'W
2	49°10.639'N	002°09.459'W
3	49°10.011'N	002°09.120'W
4	49°09.850'N	002°09.688'W
5	49°09.909'N	002°10.076'W

- (3) For the text of Schedule 1A there is substituted –

1. The Jersey Coastal Marine Protected Area (“MPA”), namely the waters within the following co-ordinates (using the World Geodetic System 1984 (“WGS84”) reference system) beginning with co-ordinate 1 and joining in the sequence given, in a series of straight lines, co-ordinates 1 to 31 and then joining co-ordinate 31 to co-ordinate 1 –

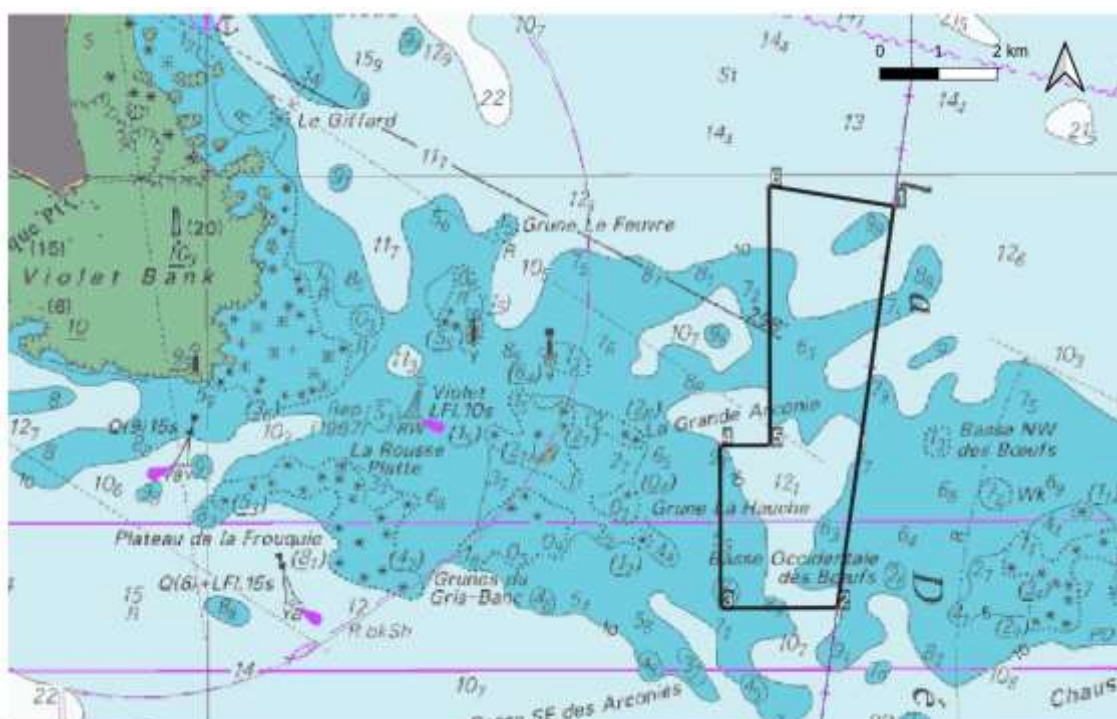
Co-ordinate number	Latitude (WGS84)	Longitude (WGS84)
1	49°14.000'N	001°59.500'W
2	49°11.000'N	001°59.500'W
3	49°10.600'N	001°59.000'W
4	49°09.850'N	001°58.440'W
5	49°09.850'N	001°55.400'W
6	49°08.700'N	001°55.400'W
7	49°08.700'N	001°54.600'W
8	49°07.500'N	001°54.000'W
9	49°06.800'N	001°54.000'W
10	49°06.800'N	002°01.000'W
11	49°09.000'N	002°06.140'W
12	49°10.540'N	002°08.150'W

13	49°10.504'N	002°09.386'W
14	49°10.010'N	002°09.120'W
15	49°08.375'N	002°10.000'W
16	49°08.375'N	002°15.350'W
17	49°10.000'N	002°15.350'W
18	49°10.000'N	002°13.950'W
19	49°10.450'N	002°13.950'W
20	49°10.625'N	002°15.375'W
21	49°12.400'N	002°15.375'W
22	49°13.125'N	002°18.500'W
23	49°16.870'N	002°18.500'W
24	49°16.870'N	002°13.200'W
25	49°15.815'N	002°13.200'W
26	49°15.815'N	002°12.250'W
27	49°15.370'N	002°11.170'W
28	49°15.840'N	002°09.400'W
29	49°16.000'N	002°07.830'W
30	49°15.870'N	002°06.625'W
31	49°17.000'N	002°06.625'W



2. The Basse des Boeufs MPA, namely the areas within the following WGS84 co-ordinates beginning with co-ordinate 1 and joining in the sequence given, in a series of straight lines, co-ordinates 1 to 6 and then joining co-ordinate 6 to co-ordinate 1 –

Co-ordinate number	Latitude (WGS84)	Longitude (WGS84)
1	49°09.697'N	001°50.347'W
2	49°06.000'N	001°51.161'W
3	49°06.000'N	001°52.800'W
4	49°07.500'N	001°52.800'W
5	49°07.500'N	001°52.100'W
6	49°09.888'N	001°52.100'W



3. The Ecrehous MPA, namely the waters within the following WGS84 co-ordinates beginning with co-ordinate 1 and joining in the sequence given, in a series of straight lines, co-ordinates 1 to 6 and then joining co-ordinate 6 to co-ordinate 1 –

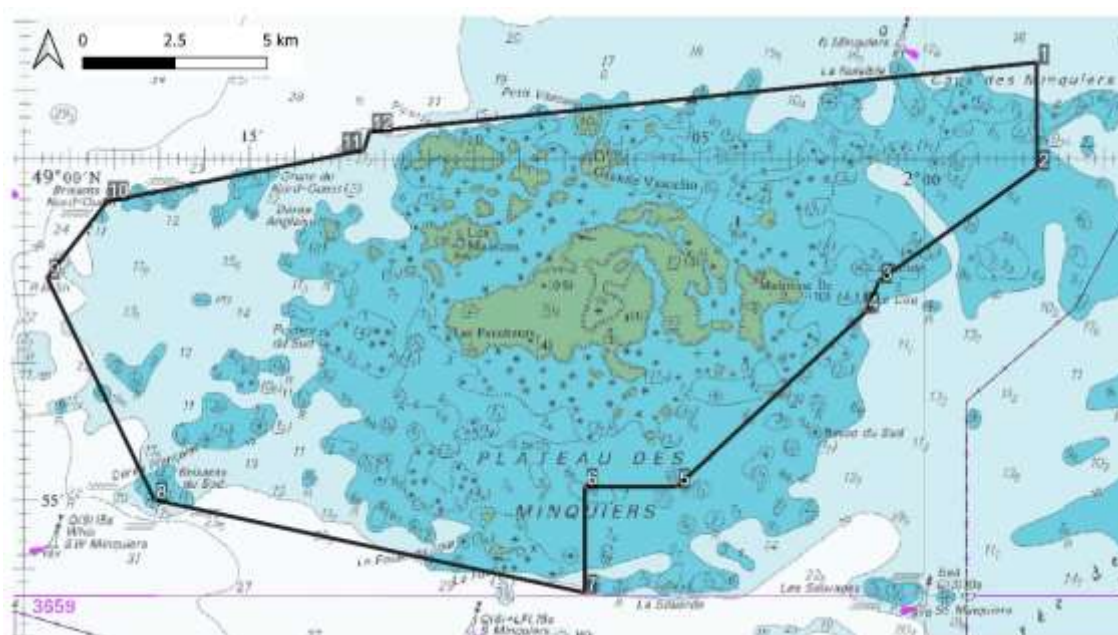
Co-ordinate number	Latitude (WGS84)	Longitude (WGS84)
1	49°19.000'N	001°55.400'W
2	49°15.200'N	001°52.000'W
3	49°16.600'N	001°54.500'W

4	49°15.740'N	001°54.780'W
5	49°17.400'N	002°03.400'W
6	49°19.000'N	002°03.400'W



4. The Minquiers MPA, namely the waters within the following WGS84 co-ordinates beginning with co-ordinate 1 and joining in the sequence given, in a series of straight lines, co-ordinates 1 to 12 and then joining co-ordinate 12 to co-ordinate 1 –

Co-ordinate number	Latitude (WGS84)	Longitude (WGS84)
1	49°01.400'N	001°57.500'W
2	48°59.850'N	001°57.500'W
3	48°58.200'N	002°01.000'W
4	48°57.770'N	002°01.290'W
5	48°55.200'N	002°05.500'W
6	48°55.200'N	002°07.550'W
7	48°53.650'N	002°07.550'W
8	48°55.000'N	002°17.100'W
9	49°58.250'N	002°19.500'W
10	48°59.400'N	002°18.200'W
11	49°00.120'N	002°12.470'W
12	49°00.400'N	002°12.330'W



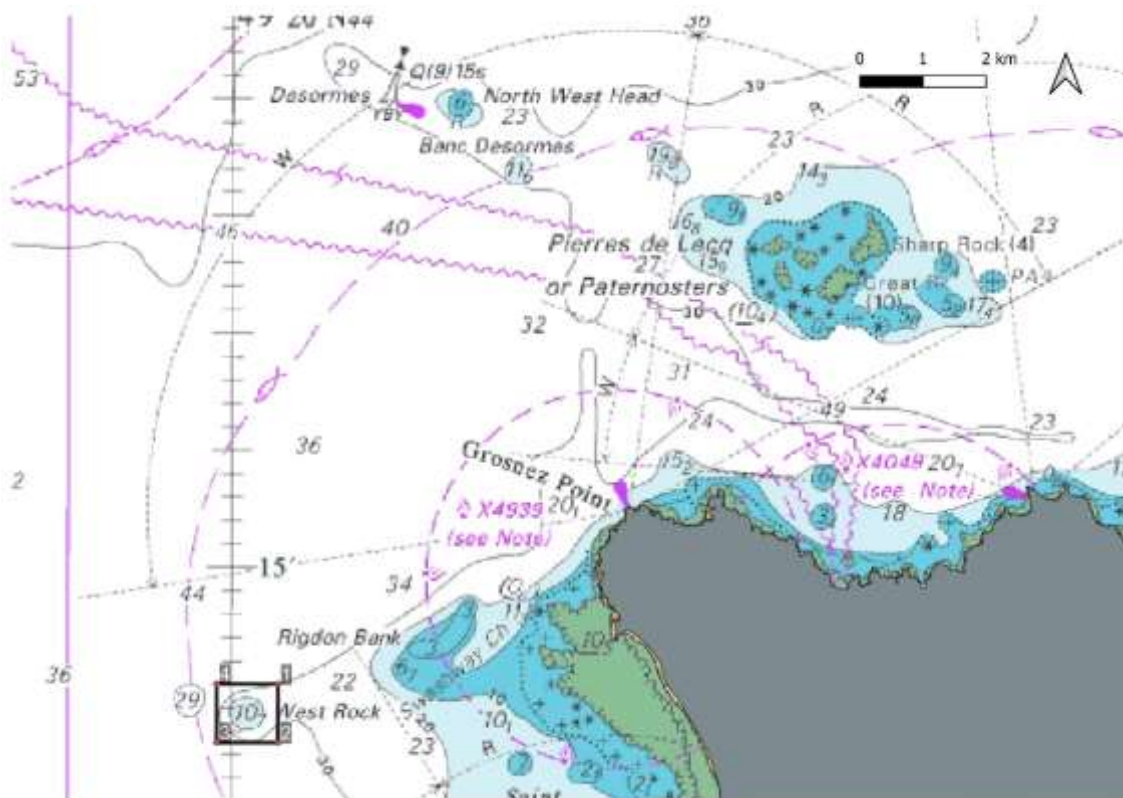
5. The Paternosters MPA, namely the waters within the following WGS84 co-ordinates beginning with co-ordinate 1 and joining in the sequence given, in a series of straight lines, co-ordinates 1 to 6 and then joining co-ordinate 6 to co-ordinate 1 –

Co-ordinate number	Latitude (WGS84)	Longitude (WGS84)
1	49°18.200'N	002°11.300'W
2	49°17.750'N	002°11.300'W
3	49°17.000'N	002°12.280'W
4	49°17.000'N	002°12.550'W
5	49°17.300'N	002°13.200'W
6	49°18.200'N	002°13.200'W



6. The West Rock MPA, namely the waters within the following WGS84 co-ordinates beginning with co-ordinate 1 and joining in the sequence given, in a series of straight lines, co-ordinates 1 to 4 and then joining co-ordinate 4 to co-ordinate 1 –

Co-ordinate number	Latitude (WGS84)	Longitude (WGS84)
1	49°14.000'N	002°19.400'W
2	49°13.500'N	002°19.400'W
3	49°13.500'N	002°20.200'W
4	49°14.000'N	002°20.200'W



7. The Banc Desormes MPA, namely the waters within the following WGS84 co-ordinates beginning with co-ordinate 1 and joining in the sequence given, in a series of straight lines, co-ordinates 1 to 4 and then joining co-ordinate 4 to co-ordinate 1 –

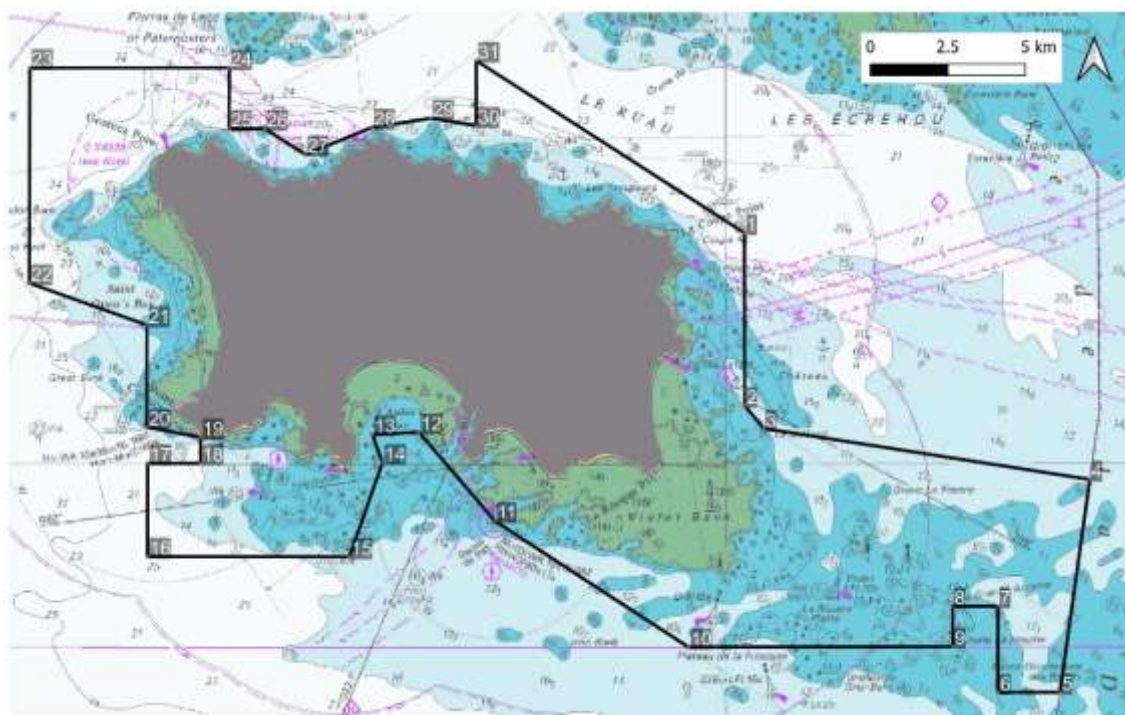
Co-ordinate number	Latitude (WGS84)	Longitude (WGS84)
1	49°19.200'N	002°16.600'W
2	49°18.650'N	002°16.600'W
3	49°18.650'N	002°17.450'W
4	49°19.200'N	002°17.450'W



- (4) In Schedule 1A –
 (a) in paragraph 1, in the table, for rows 4 to 7 there is substituted –

4	49°09.697'N	001°50.347'W
5	49°06.000'N	001°51.161'W
6	49°06.000'N	001°52.800'W
7	49°07.500'N	001°52.800'W

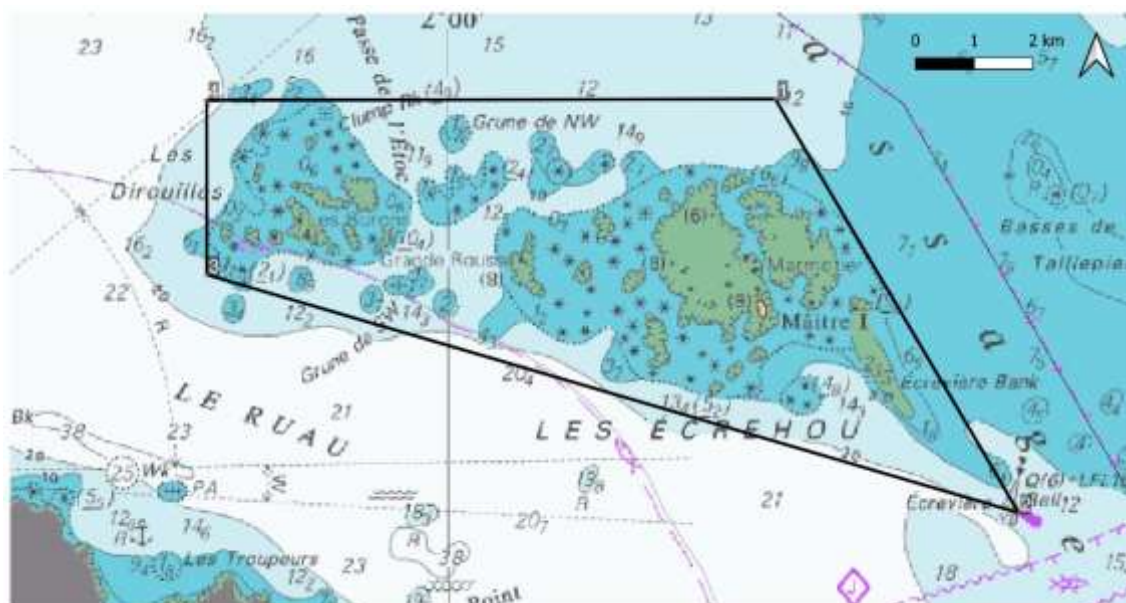
- (b) in paragraph 1, for the chart there is substituted –



- (c) paragraph 2 is deleted;
- (d) for paragraph 3 there is substituted –

3. The Erehou MPA, namely the waters within the following WGS84 co-ordinates beginning with co-ordinate 1 and joining in the sequence given, in a series of straight lines, co-ordinates 1 to 4 and then joining co-ordinate 4 to co-ordinate 1 –

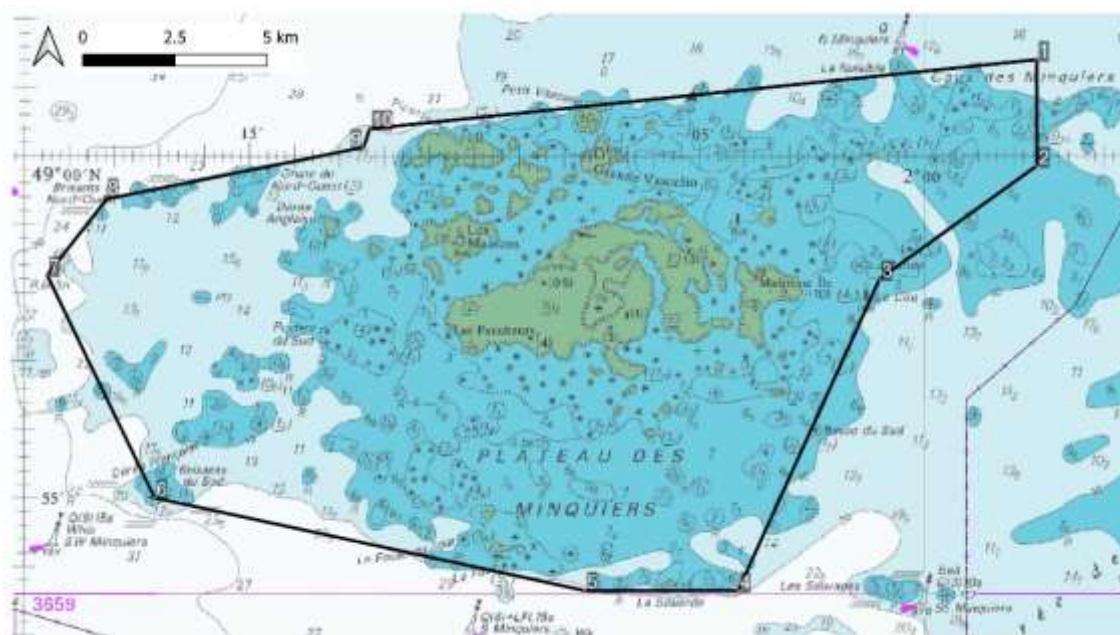
Co-ordinate number	Latitude (WGS84)	Longitude (WGS84)
1	49°19.000'N	001°55.400'W
2	49°15.200'N	001°52.000'W
3	49°17.400'N	002°03.400'W
4	49°19.000'N	002°03.400'W



(e) for paragraph 4 there is substituted –

4. The Minquiers MPA, namely the waters within the following WGS84 co-ordinates beginning with co-ordinate 1 and joining in the sequence given, in a series of straight lines, co-ordinates 1 to 10 and then joining co-ordinate 10 to co-ordinate 1 –

Co-ordinate number	Latitude (WGS84)	Longitude (WGS84)
1	49°01.400'N	001°57.500'W
2	48°59.850'N	001°57.500'W
3	48°58.200'N	002°01.000'W
4	48°53.650'N	002°04.150'W
5	48°53.650'N	002°07.550'W
6	48°55.000'N	002°17.100'W
7	48°58.250'N	002°19.500'W
8	48°59.400'N	002°18.200'W
9	49°00.120'N	002°12.470'W
10	49°00.400'N	002°12.330'W



9 Schedule 1B inserted

Before Schedule 2 there is inserted –

SCHEDULE 1B

(Regulation 3(2))

SEASONALLY RESTRICTED SEA AREAS

Column 1		Column 2	
Area description		Period of restriction	
<p>The waters off the north-west Dirouilles situated within the area denoted by following the co-ordinates beginning with co-ordinate 1 and joining in the sequence given, in a series of straight lines, co-ordinates 1 to 4 and then joining co-ordinate 4 to co-ordinate 1 –</p>		<p>The start of 1 April to the end of 31 July</p>	
Co-ordinate number	Latitude (WGS84)		Longitude (WGS84)
1	49°22.100'N		002°05.000'W
2	49°20.000'N		002°05.000'W
3	49°20.000'N		002°09.600'W
4	49°22.100'N	002°09.600'W	
<p>The waters south of the Frouquier Aubert buoy situated within the</p>		<p>The start of 1 April to</p>	

<p>area denoted by following the co-ordinates beginning with co-ordinate 1 and joining in the sequence given, in a series of straight lines, co-ordinates 1 to 4 and then joining co-ordinate 4 to co-ordinate 1 –</p>			<p>the end of 31 July</p>
Co-ordinate number	Latitude (WGS84)	Longitude (WGS84)	
1	49°05.100'N	001°55.000'W	
2	49°02.500'N	001°55.000'W	
3	49°02.500'N	002°03.200'W	
4	49°05.100'N	002°03.200'W	
<p>The waters off the north of Jersey situated within the area denoted by following the co-ordinates beginning with co-ordinate 1 and joining in the sequence given, in a series of straight lines, co-ordinates 1 to 8 and then joining co-ordinate 8 to co-ordinate 1 –</p>			<p>The start of July 1 to the end of 30 September</p>
Co-ordinate number	Latitude (WGS84)	Longitude (WGS84)	
1	49°17.000'N	002°13.200'W	
2	49°17.000'N	002°06.625'W	
3	49°15.870'N	002°06.625'W	
4	49°16.000'N	002°07.830'W	
5	49°15.840'N	002°09.400'W	
6	49°15.370'N	002°11.170'W	
7	49°15.815'N	002°12.250'W	
8	49°15.815'N	002°13.200'W	
<p>The waters off the west of Jersey situated within the area denoted by following the co-ordinates beginning with co-ordinate 1 and joining in the sequence given, in a series of straight lines, co-ordinates 1 to 4 and then joining co-ordinate 4 to co-ordinate 1 –</p>			<p>The start of April 1 to the end of September 30</p>
Co-ordinate number	Latitude (WGS84)	Longitude (WGS84)	
1	49°13.125'N	002°18.500'W	
2	49°12.400'N	002°15.375'W	
3	49°10.625'N	002°15.375'W	

4	49°10.625'N	002°16.900'W	<p>The waters off the south-west of Jersey situated within the area denoted by following the co-ordinates beginning with co-ordinate 1 and joining in the sequence given, in a series of straight lines, co-ordinates 1 to 4 and then joining co-ordinate 4 to co-ordinate 1 –</p> <p>The start of April 1 to the end of September 30</p>
Co-ordinate number	Latitude (WGS84)	Longitude (WGS84)	
1	49°10.625'N	002°15.375'W	
2	49°10.450'N	002°13.950'W	
3	49°10.000'N	002°13.950'W	
4	49°10.000'N	002°15.350'W	
<p>The waters off the south of Jersey situated within the area denoted by following the co-ordinates beginning with co-ordinate 1 and joining in the sequence given, in a series of straight lines, co-ordinates 1 to 4 and then joining co-ordinate 4 to co-ordinate 1 –</p> <p>The start of April 1 to the end of September 30</p>			
Co-ordinate number	Latitude (WGS84)	Longitude (WGS84)	
1	49°10.010'N	002°09.120'W	
2	49°10.504'N	002°09.386'W	
3	49°10.540'N	002°08.150'W	
4	49°10.010'N	002°07.460'W	

10 Schedule 2 (permitted combinations of mesh size ranges) deleted

Schedule 2 is deleted.

11 Schedule 3 (conditions for use of combinations of nets that includes a net with a mesh size of 100 millimetres or more) deleted

Schedule 3 is deleted.

12 Schedule 5 (bottom set gillnets, entangling nets and trammel nets) deleted

Schedule 5 is deleted.

13 Schedule 8 (technical specifications of the mesh gauge) amended

- (1) In Schedule 8, in the footnote (*) to sub-paragraph (1)(l), for “International protection” there is substituted “Internal protection”.
- (2) In Schedule 8, after sub-paragraph (1)(v), there is inserted –
 | (w) be marked with the words “EC gauge”.
- (3) In Schedule 8, in the table after sub-paragraph (2), under the heading “Specifications”, in the entry “Operating”, for “+40°C” there is substituted “+45°C”.

14 Schedule 9 (technical specifications of the twine thickness gauge) amended

In Schedule 9, after clause (j) there is inserted –

- | (k) be marked with the words “EC gauge”.

15 Schedule 11 (preparation of the mesh gauge) amended

In schedule 11, in paragraph (1)(d)(i), for “active gear” there is substituted “mobile gear”.

16 Minor amendments

Schedule 1 contains minor amendments.

17 Consequential amendment

In the [Sea Fisheries \(Licensing of Fishing Boats\) \(Jersey\) Regulations 2003](#), Regulation 3A is deleted.

PART 2

[SEA FISHERIES \(MISCELLANEOUS PROVISIONS\) \(JERSEY\) REGULATIONS 1998](#) AMENDED

18 [Sea Fisheries \(Miscellaneous Provisions\) \(Jersey\) Regulations 1998](#) amended

This Part amends the [Sea Fisheries \(Miscellaneous Provisions\) \(Jersey\) Regulations 1998](#).

19 Regulations 8F (sea fish to be retained on board whole) and 8G (prohibition on taking sea fish using electric current) inserted

After Regulation 8E there is inserted –

8F Sea fish to be retained on board whole

- (1) The species of sea fish specified in the Schedule must be retained on board whole.
- (2) But if edible crabs and spider crabs (as described in the Schedule) are caught using pots or creels, static nets or mobile fishing gear, detached claws may make up a maximum of 1% by weight of the total catch of those crabs, or parts

of those crabs, retained on board at any one time during a fishing voyage or landed at the end of a fishing voyage.

8G Prohibition on taking sea fish using electric current

A person must not use, or cause to be used, an electric current for the purpose of fishing for sea fish.

20 Schedule inserted

After Regulation 9 there is inserted –

SCHEDULE

(Article 8F)

SEA FISH TO BE RETAINED ON BOARD WHOLE

Sea fish
Lobster (<i>Homarus gammarus</i>)
Crawfish (<i>Palinurus elephas</i>)
King scallop (<i>Pecten maximus</i>)
Chancre (Edible crab) (<i>Cancer pagurus</i>)
Spider crab (<i>Maja brachydactyla</i>)

PART 3

[SEA FISHERIES \(MINIMUM SIZE LIMITS\) \(JERSEY\) REGULATIONS 2001](#) AMENDED

21 [Sea Fisheries \(Minimum Size Limits\) \(Jersey\) Regulations 2001](#) amended

This Part amends the [Sea Fisheries \(Minimum Size Limits\) \(Jersey\) Regulations 2001](#).

22 Regulation 7 (certain sea fish to be retained whole) deleted

Regulation 7 is deleted.

PART 4

FINAL PROVISIONS

23 Repeal

The [Sea Fisheries \(Inshore Trawling, Netting and Dredging\) \(Jersey\) Regulations 2001](#) are repealed.

24 Citation and commencement

- (1) These Regulations may be cited as the Sea Fisheries (Trawling, Netting and Dredging) (Jersey) Amendment Regulations 202-.
- (2) Subject to paragraph (3) and (4), these Regulations come into force on a day to be specified by the Minister for the Environment by Order.
- (3) Regulation 8(3) comes into force on 1 September 2026.
- (4) Regulation 8(4) comes into force on 1 January 2030.

SCHEDULE 1

(Regulation 16)

MINOR AMENDMENTS TO THE [SEA FISHERIES \(TRAWLING, NETTING AND DREDGING\) \(JERSEY\) REGULATIONS 2001](#)

1 Regulation 1 (interpretation)

- (1) In Regulation 1, after the definition “codline” there is inserted –
“diamond mesh” means a mesh as shown in figure 1 of Schedule 7, composed of 4 bags of the same length where the 2 diagonals of the mesh are perpendicular and one diagonal is parallel to the longitudinal axis of the net as shown in figure 2 of Schedule 7;
- (2) In Regulation 1, for the definition “mesh size” there is substituted –
“mesh size” means –
 - (a) in respect of a mesh of knotted netting, the longest distance between 2 opposite knots in the same mesh when fully extended as shown in Schedule 6;
 - (b) in respect of a mesh of knotless netting, the inside distance between the opposite joints in the same mesh when fully extended along its longest possible axis;
- (3) In Regulation 1, the definition “scallop dredge” is deleted.
- (4) In Regulation 1, after the definition “sieve netting” there is inserted –
“square mesh” means a quadrilateral mesh composed of 2 sets of parallel bars of the same length, where 1 set is parallel to, and the other is at right angles to, the longitudinal axis of the net;

2 Regulation 27 amended

- (1) In Regulation 27, the definition “diamond-mesh” is deleted.
- (2) In Regulation 27, the definition “mesh size” is deleted.
- (3) In Regulation 27, the definition “square mesh” is deleted.

3 References to “fisheries officer” and “fishing officer” amended

- (1) For “fisheries officer” there is substituted “fishery officer” in –
 - (a) Regulation 31(3);
 - (b) Regulation 31(4);
 - (c) Regulation 32(3);
 - (d) Regulation 33;
 - (e) Regulation 34(1);
 - (f) Regulation 35(1);
 - (g) Regulation 36;

- (h) Regulation 37D(1);
 - (i) Regulation 37E(1);
 - (j) Regulation 37F;
 - (k) Regulation 37G;
 - (l) Regulation 37H;
 - (m) Regulation 37I(1), (2) and (3);
 - (n) Regulation 37J(2);
 - (o) Schedule 9, sub-paragraph (h);
 - (p) Schedule 11, paragraph 1 and 1(e);
 - (q) Schedule 12.
- (2) In Regulation 37B(2), for “fishing officer” there is substituted “fishery officer”.

4 Regulation 60 amended

In Regulation 60, in the heading, for “Toquettes” there is substituted “Torquettes”.